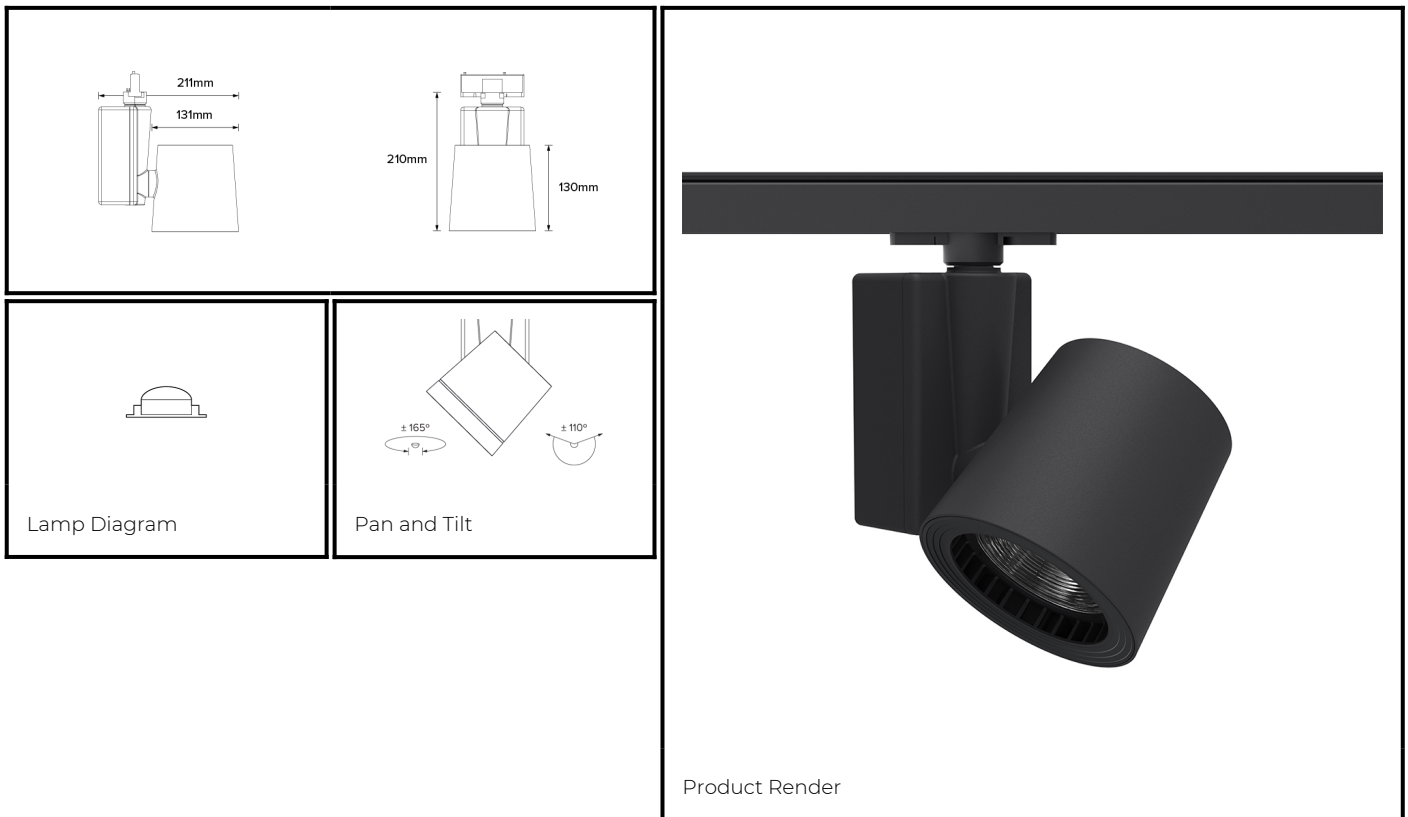


DRX2; 2-Circuit Track LED 7° Optic 36W



| | | |
|----------|---------------------------------|--|
| PHYSICAL | CONSTRUCTION MATERIALS: | A380 Aluminium, Glass-filled Polycarbonate |
| | MOUNTING: | 2-Circuit Track |
| | WEIGHT: | 1.9 kg |
| | FINISH: | Black RAL9005 |
| | MAX AMBIENT TEMPERATURE: | 40°C |
| | CEILING CLEARANCE: | n/a |
| | CEILING CUT-OUT: | n/a |
| CONTROL | CEILING THICKNESS: | n/a |
| | MOVEMENT TYPE: | Handheld |
| CONTROL | DIMMING OPTION: | 1-10V |

SPECIFICATION DRX2 3000K LED (25W for light source) compact spotlight for 2-Circuit Eutrac with 7° optic. Manufactured from A380 aluminium and glass-filled polycarbonate. Finished in black (RAL 9005). Voltage is 100-240V 50/60HZ. Luminaire has high-performance colour rendering of 90+ CRI. Luminaire can be rotated, with +/- 165° movement through the pan axis and +/- 110° through the tilt axis, at a resolution of less than 1° in either axis. Movement is controlled using a handheld remote, and dimming is controlled using external 1-10V dimming. Recording and recalling of scenes as standard. Product is ETL listed to UL1574 and CSA C22.2#9.0 standards.

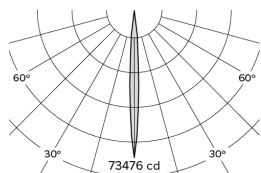
PART NO.

DRX2.0059.US

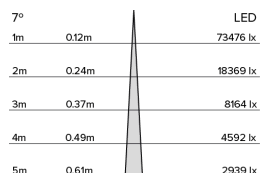
PRODUCT SUMMARY

DRX2 Spotlight; USA; 100-240V 50/60Hz; 2~ Eutrac; 7° Optic; 3000K 90+CRI COB LED 25W; Black; Movement using Handheld Remote; Dimming Using External (1-10V)

DRX2; 2-Circuit Track LED 7° Optic 36W



Photometry



Cone Diagram

| | | |
|----------|---------------------------|----------|
| MOVEMENT | MOVEMENT TYPE: | Handheld |
| | PAN MOVEMENT RANGE: | ±165° |
| | TILT MOVEMENT RANGE: | ±110° |
| | PAN MOVEMENT RESOLUTION: | <1° |
| | TILT MOVEMENT RESOLUTION: | <1° |
| | PAN SPEED OF MOVEMENT: | 24°/s |
| | TILT SPEED OF MOVEMENT: | 22°/s |

| | | |
|----------|----------------------------|--------|
| LIGHTING | LIGHT SOURCE: | LED |
| | MIN. DISTANCE FROM TARGET: | |
| | MODULE LUMEN OUTPUT: | 2200LM |
| | ABSOLUTE LUMEN OUTPUT: | 1814LM |
| | GLARE MECHANICAL CUT-OFF: | 11° |
| | GLARE COMFORT CUT-OFF: | 53° |
| | COLOUR TEMP: | 3000K |

| | | |
|------------|----------------------------|------------------|
| ELECTRICAL | VOLTAGE REGION: | 100-240V 50/60Hz |
| | IEC PROTECTION CLASS: | Class I |
| | LIGHT SOURCE WATTAGE: | 25W |
| | MOVEMENT WATTAGE: | 4W |
| | LUMINAIRE CIRCUIT WATTAGE: | 36W |

PART NO.

DRX2.0059.US

PRODUCT SUMMARY

DRX2 Spotlight; USA; 100-240V 50/60Hz; 2~ Eutrac; 7° Optic; 3000K 90+CRI COB LED 25W; Black; Movement using Handheld Remote; Dimming Using External (1-10V)