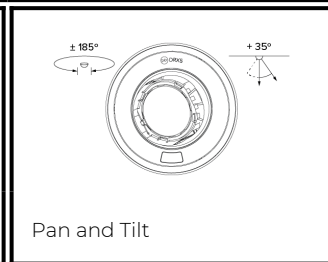
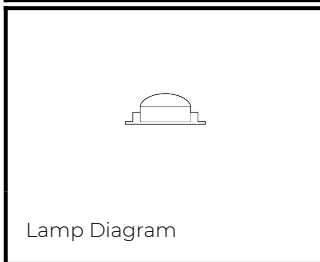
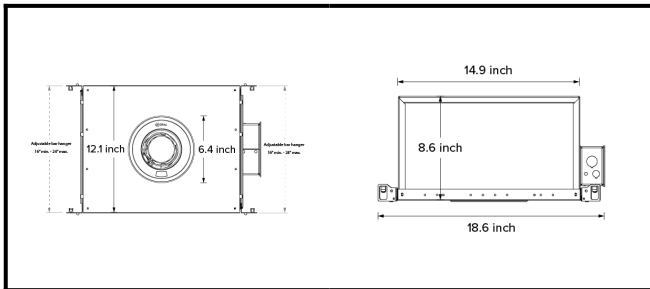


DRX5; Recessed - Standard Trim LED 10° Optic 20W



PHYSICAL	CONSTRUCTION MATERIALS:	LM24 Aluminium, Glass-filled Polycarbonate, Mild Steel mounting ring
	MOUNTING:	Recessed - Standard Trim
	WEIGHT:	1.55kg
	FINISH:	White RAL9010
	MAX AMBIENT TEMPERATURE:	40°C
	CEILING CLEARANCE:	9 inches
	CEILING CUT-OUT:	Ø5.71 inches (Ø145mm)
	CEILING THICKNESS:	0.4 - 2 inches

CONTROL	MOVEMENT TYPE:	Handheld
	DIMMING OPTION:	DMX

SPECIFICATION DRX5 3000K LED (17W for light source) standard trim recessed luminaire with 10° optic. Manufactured from LM24 aluminium and glass-filled polycarbonate with a mild-steel mounting ring, installed in a mild-steel recessed IC housing with junction box. Finished in white (RAL 9010). Voltage is 100-277V 50/60HZ. Luminaire has high-performance colour rendering of 90+ CRI. Luminaire can be rotated, with +/- 185° movement through the pan axis and +35 through the tilt axis, at a resolution of less than 1° in either axis. Movement is controlled using a handheld remote, and dimming is controlled using DMX Recording and recalling of scenes as standard. Product is ETL listed to UL1598 and CSA C22.2#250.0 standards.

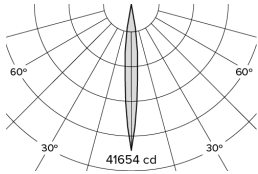
PART NO.

DRX5.0012.US
PRODUCT SUMMARY

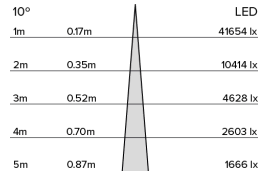
DRX5 Spotlight; USA; 100-277V 50/60Hz; Standard Trim Mounting; 10° Optic; 3000K 90+CRI LED 17W; White; Movement using Handheld Remote; Dimming using DMX Control

DRX5; Recessed - Standard Trim

LED 10° Optic 20W



Photometry



Cone Diagram

MOVEMENT	MOVEMENT TYPE:	Handheld
	PAN MOVEMENT RANGE:	±185°
	TILT MOVEMENT RANGE:	+35°
	PAN MOVEMENT RESOLUTION:	<1°
	TILT MOVEMENT RESOLUTION:	<1°
	PAN SPEED OF MOVEMENT:	20°/s
	TILT SPEED OF MOVEMENT:	20°/s

LIGHTING	LIGHT SOURCE:	LED
	MIN. DISTANCE FROM TARGET:	N/A
	MODULE LUMEN OUTPUT:	1573LM
	ABSOLUTE LUMEN OUTPUT:	1474LM
	GLARE MECHANICAL CUT-OFF:	17°
	GLARE COMFORT CUT-OFF:	52°
COLOUR TEMP:	3000K	

ELECTRICAL	VOLTAGE REGION:	100-277V 50/60Hz
	IEC PROTECTION CLASS:	Class 2
	LIGHT SOURCE WATTAGE:	17W
	MOVEMENT WATTAGE:	3W
	LUMINAIRE CIRCUIT WATTAGE:	20W

PART NO.

DRX5.0012.US

PRODUCT SUMMARY

DRX5 Spotlight; USA; 100-277V 50/60Hz; Standard Trim Mounting; 10° Optic; 3000K 90+CRI LED 17W; White; Movement using Handheld Remote; Dimming using DMX Control