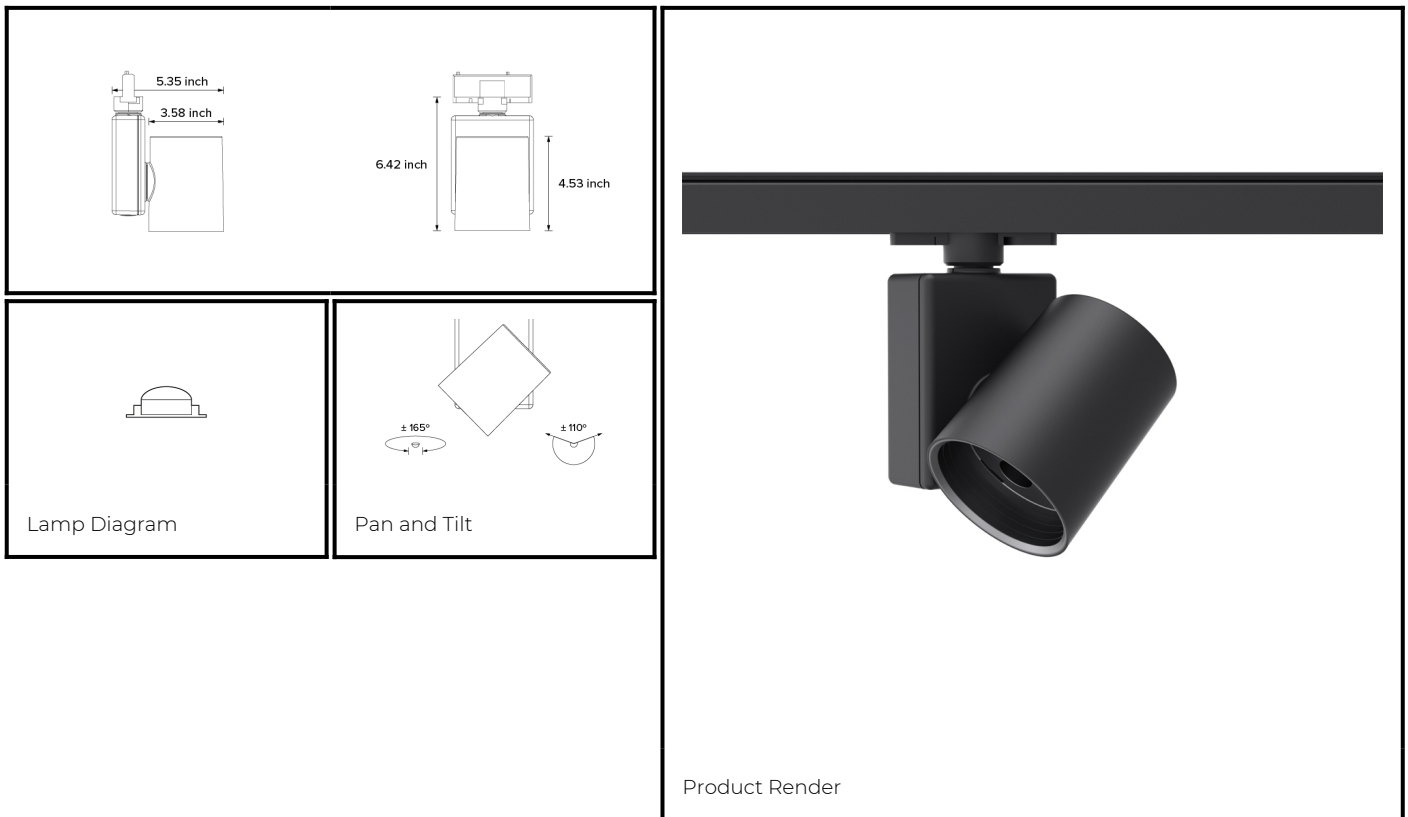


DRX1; 2-Circuit Track LED 4° Optic 15W



| | | |
|----------|---------------------------------|--|
| PHYSICAL | CONSTRUCTION MATERIALS: | A380 Aluminium, Glass-filled Polycarbonate |
| | MOUNTING: | 2-Circuit Track |
| | WEIGHT: | 1.2 kg |
| | FINISH: | Black RAL9005 |
| | MAX AMBIENT TEMPERATURE: | 40°C |
| | CEILING CLEARANCE: | n/a |
| | CEILING CUT-OUT: | n/a |
| CONTROL | CEILING THICKNESS: | n/a |
| | MOVEMENT TYPE: | Handheld |
| | DIMMING OPTION: | DMX |
| | | |
| | | |
| | | |
| | | |

SPECIFICATION DRX1 3000K LED (10W for light source) compact spotlight for 2-Circuit Eutrac with 4° optic. Manufactured from A380 aluminium and glass-filled polycarbonate. Finished in black (RAL 9005). Voltage is 100-240V 50/60HZ. Luminaire has high-performance colour rendering of 90+ CRI. Luminaire can be rotated, with +/- 165° movement through the pan axis and +/- 110° through the tilt axis, at a resolution of less than 1° in either axis. Movement is controlled using a handheld remote, and dimming is controlled using DMX. Recording and recalling of scenes as standard. Product is ETL listed to UL1574 and CSA C22.2#9.0 standards.

PART NO.

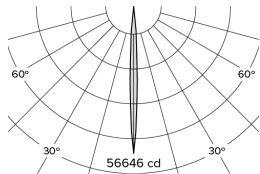
DRX1.0047.US

PRODUCT SUMMARY

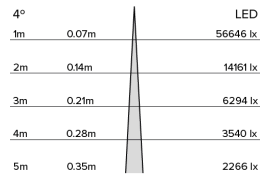
DRX1 Spotlight; USA; 100-240V 50/60Hz; 2~ Eutrac; 4° Optic; 3000K 90+CRI LED 10W; Black; Movement using Handheld Remote; Dimming using DMX Control

DRX1; 2-Circuit Track

LED 4° Optic 15W



Photometry



Cone Diagram

| | | |
|----------|---------------------------|----------|
| MOVEMENT | MOVEMENT TYPE: | Handheld |
| | PAN MOVEMENT RANGE: | ±165° |
| | TILT MOVEMENT RANGE: | ±110° |
| | PAN MOVEMENT RESOLUTION: | <1° |
| | TILT MOVEMENT RESOLUTION: | <1° |
| | PAN SPEED OF MOVEMENT: | 24°/s |
| | TILT SPEED OF MOVEMENT: | 22°/s |

| | | |
|----------|----------------------------|-------|
| LIGHTING | LIGHT SOURCE: | LED |
| | MIN. DISTANCE FROM TARGET: | |
| | MODULE LUMEN OUTPUT: | 594LM |
| | ABSOLUTE LUMEN OUTPUT: | 540LM |
| | GLARE MECHANICAL CUT-OFF: | 25 |
| | GLARE COMFORT CUT-OFF: | 50 |
| | COLOUR TEMP: | 3000K |

| | | |
|------------|----------------------------|------------------|
| ELECTRICAL | VOLTAGE REGION: | 100-240V 50/60Hz |
| | IEC PROTECTION CLASS: | Class 2 |
| | LIGHT SOURCE WATTAGE: | 10W |
| | MOVEMENT WATTAGE: | 4W |
| | LUMINAIRE CIRCUIT WATTAGE: | 15W |

PART NO.

DRX1.0047.US

PRODUCT SUMMARY

DRX1 Spotlight; USA; 100-240V 50/60Hz; 2~ Eutrac; 4° Optic; 3000K 90+CRI LED 10W; Black; Movement using Handheld Remote; Dimming using DMX Control